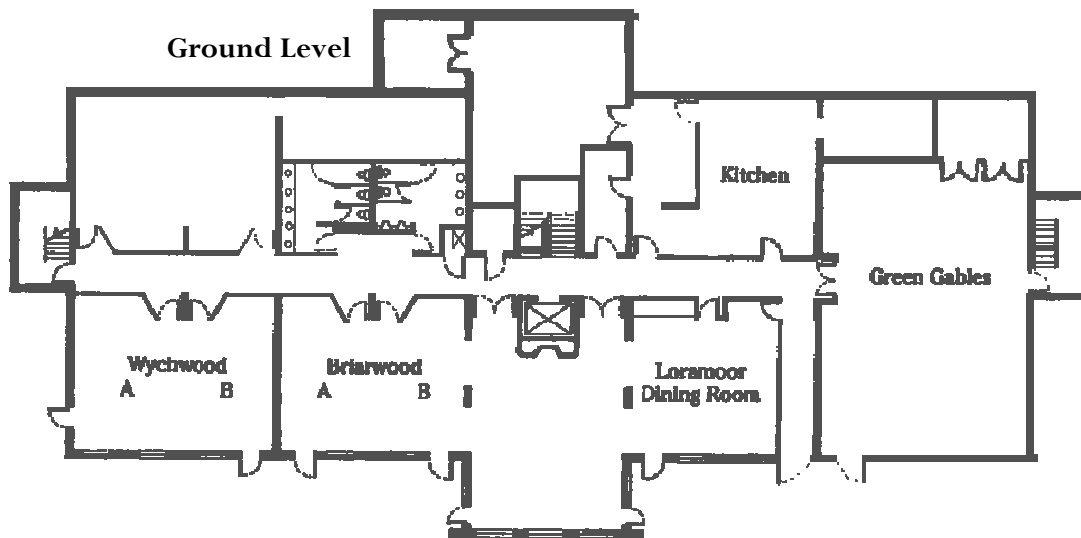
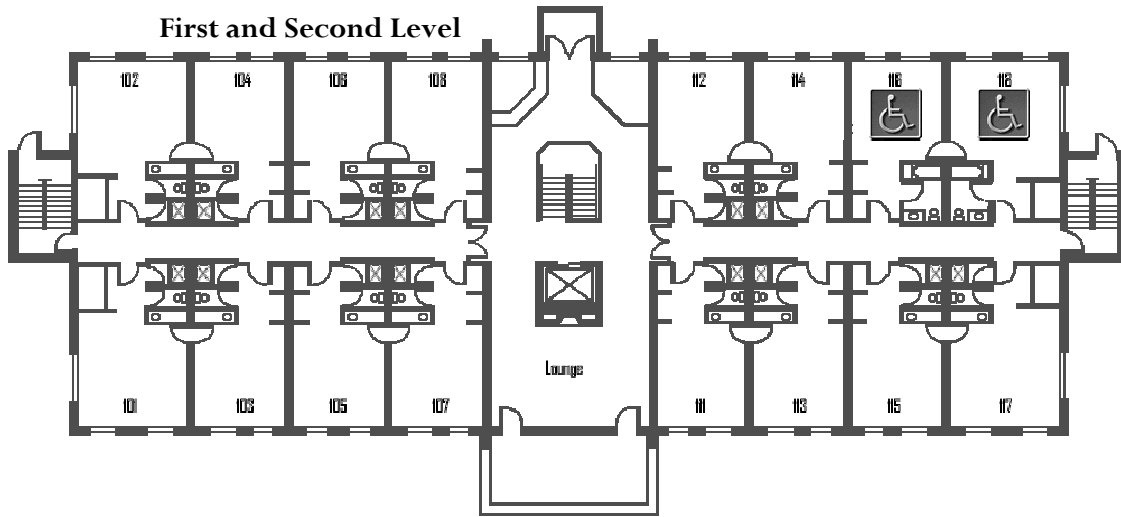


# Geneva Bay Centre

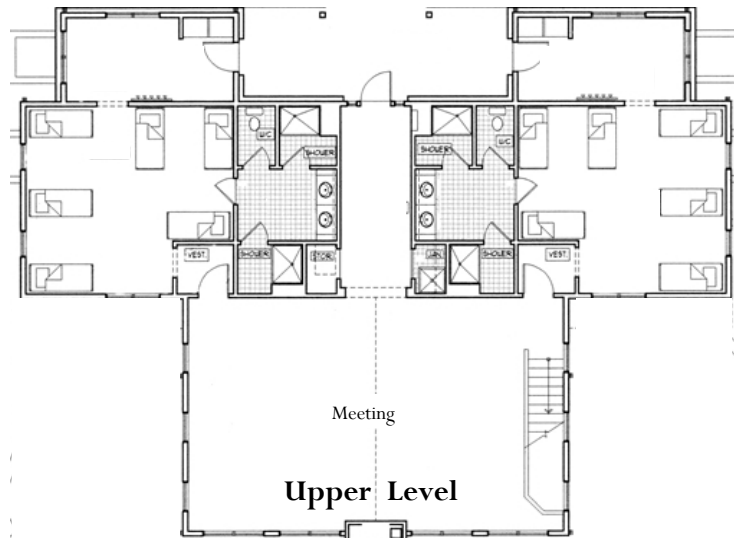
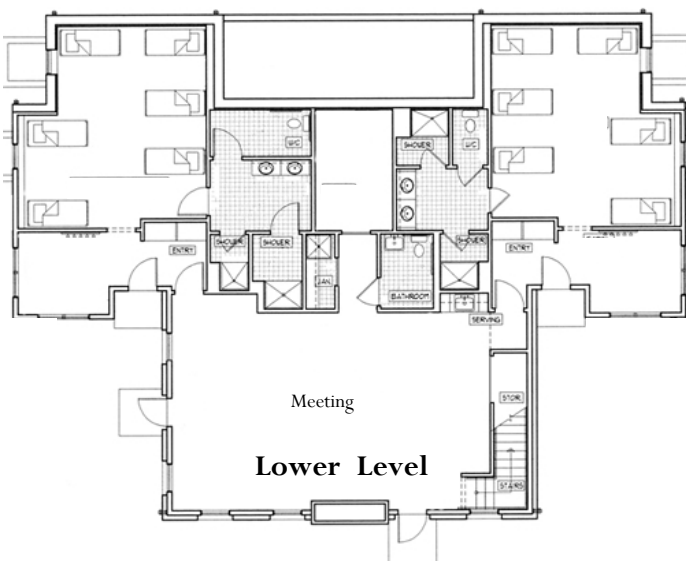
3 Levels; 32 Rooms

Guest rooms can be set up for double, triple or quad occupancy. The combination of cherry-finished mahogany furniture, brass lamps, the winged back chair, stylish sofa, comfortable beds and rich colors create a warm, relaxed and inviting atmosphere.



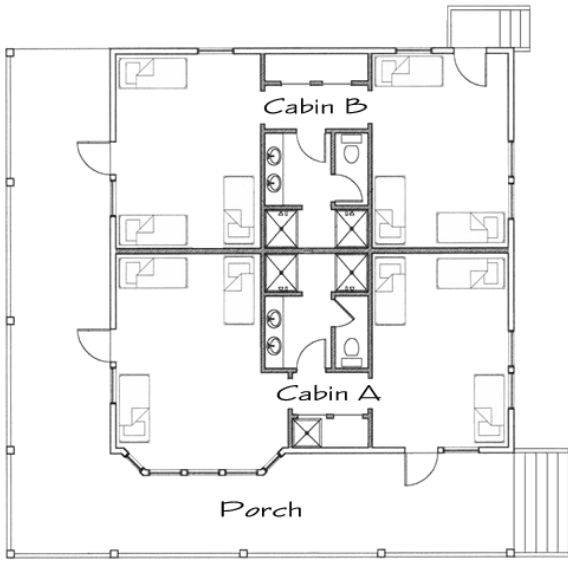
# Engebretson Lodge

Maximum 52; Minimum 40



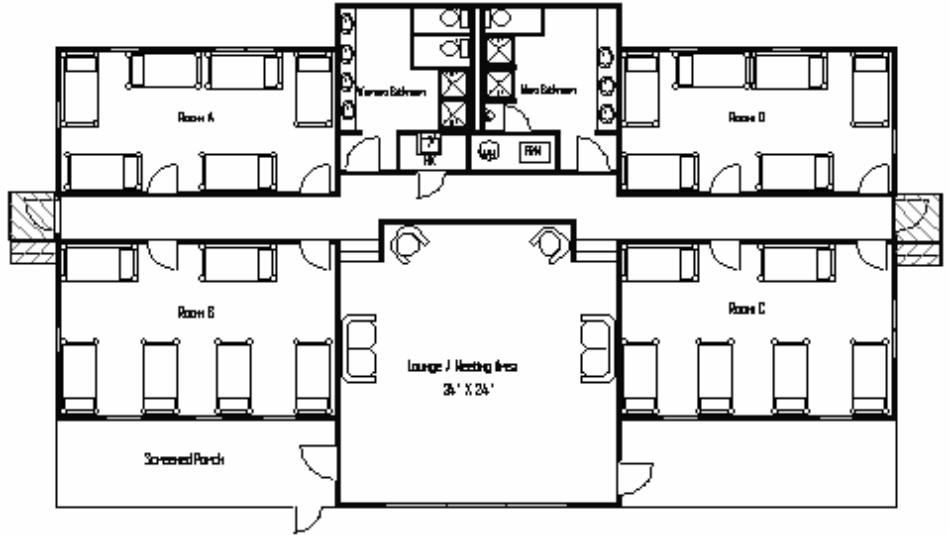
## Guest House

Maximum 24; Minimum 16  
2 Rooms of 12



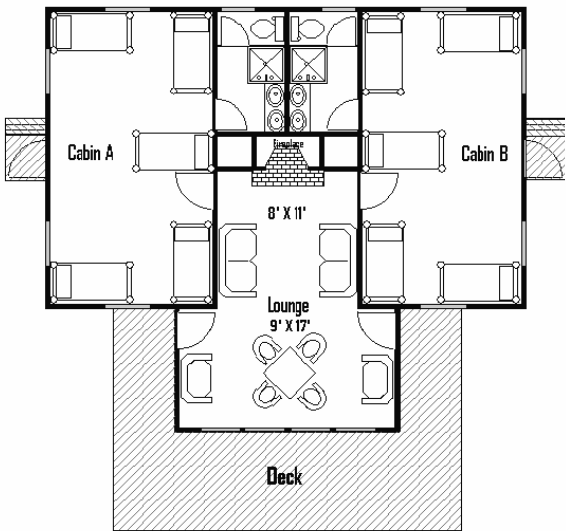
## Hilltop House

Maximum 48; Minimum 36  
4 Rooms of 12



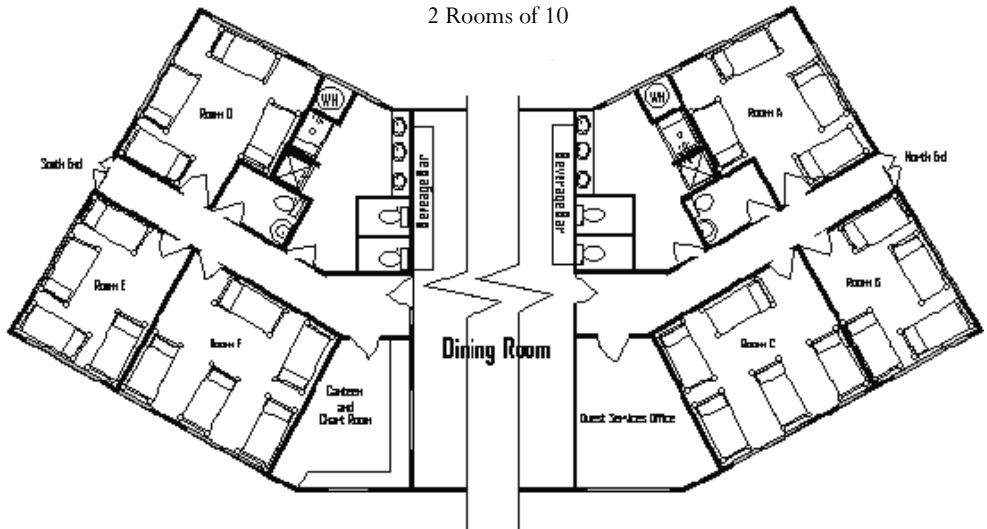
## Triplets 1,2 &3

Maximum 20 (Each); Minimum 12 (Each)  
2 Rooms of 10 (Each)



## The Lodge

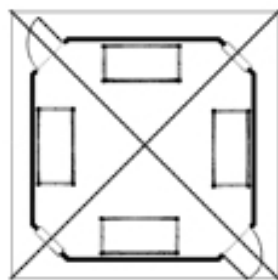
Maximum 52; Minimum 40  
4 Rooms of 8  
2 Rooms of 10



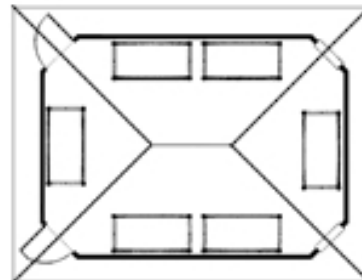
## Seasonal Lodgings

**Kishwauketoe** has 4— Type 1 buildings with a bathhouse. Maximum of 46

**Maple Commons** has 4—Type 1 buildings and 4—Type 2 buildings with 2 bathhouses. Maximum of 80



**Type 1**  
Sleeps 8



**Type 2**  
Sleeps 12